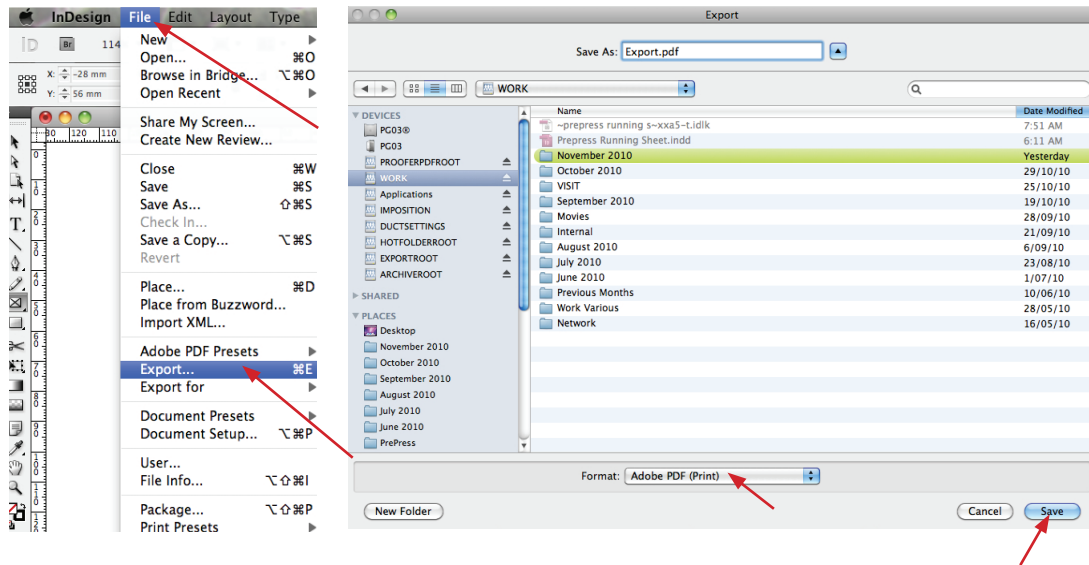


# Exporting a hires pdf from InDesign

Before creating a PDF for a service provider, make sure that the InDesign document meets your service provider's specifications.

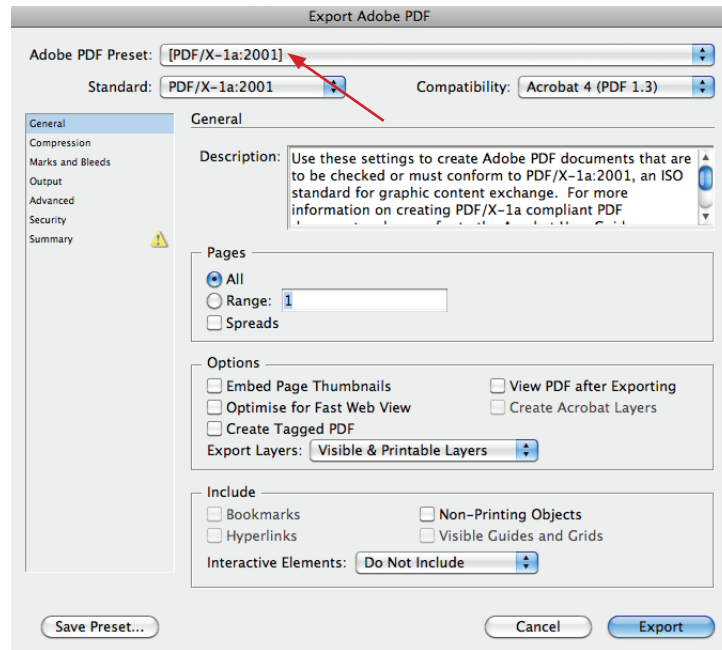
1



In the File drop down menu select EXPORT. Format - Adobe pdf, select save.

2

In the Export Adobe PDF window select PDF/X-1a:2001 and select the page range. *DO NOT SELECT SPREADS*



3

On the left side of the window select Marks and Bleeds:

Turn off All Printers Marks.

Under Bleed and Slug put in 3mm bleed all round.

**NOTE a minimum 3mm bleed is mandatory.**

If your document has been setup with bleed select

use document Bleed Settings

Select the Export button.

Your PDF will be found in the destination where you saved it.

